

Lucile Packard Foundation
for Children's Health
Created by RFENC
Made possible through a grant from

962 Maraglia Ave.
Redding, CA 96002
530-226-5129
1-877-227-3471

Rowell Family Empowerment
of Northern California, Inc.



Rural Health Coalition 2014-2015

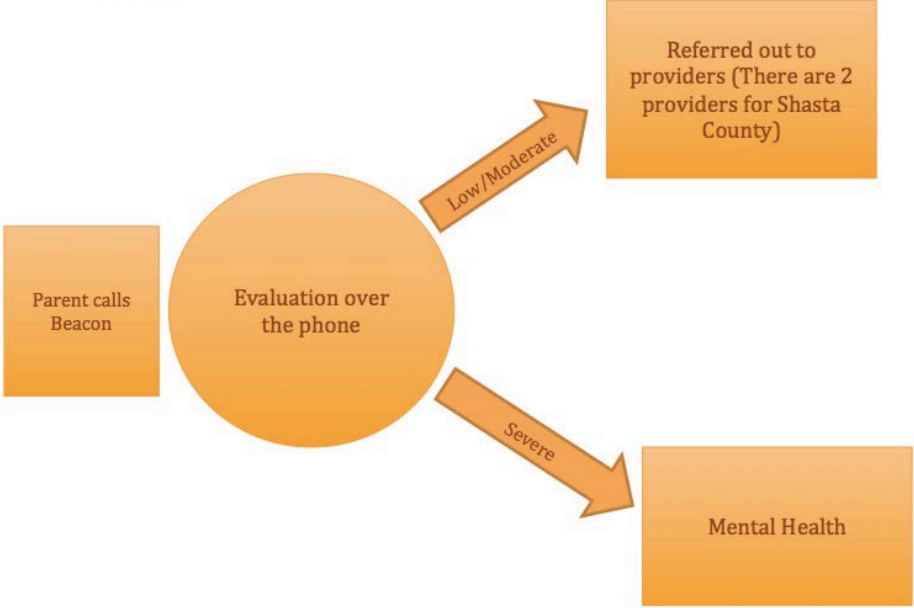


Rowell Family Empowerment
of Northern California, Inc.

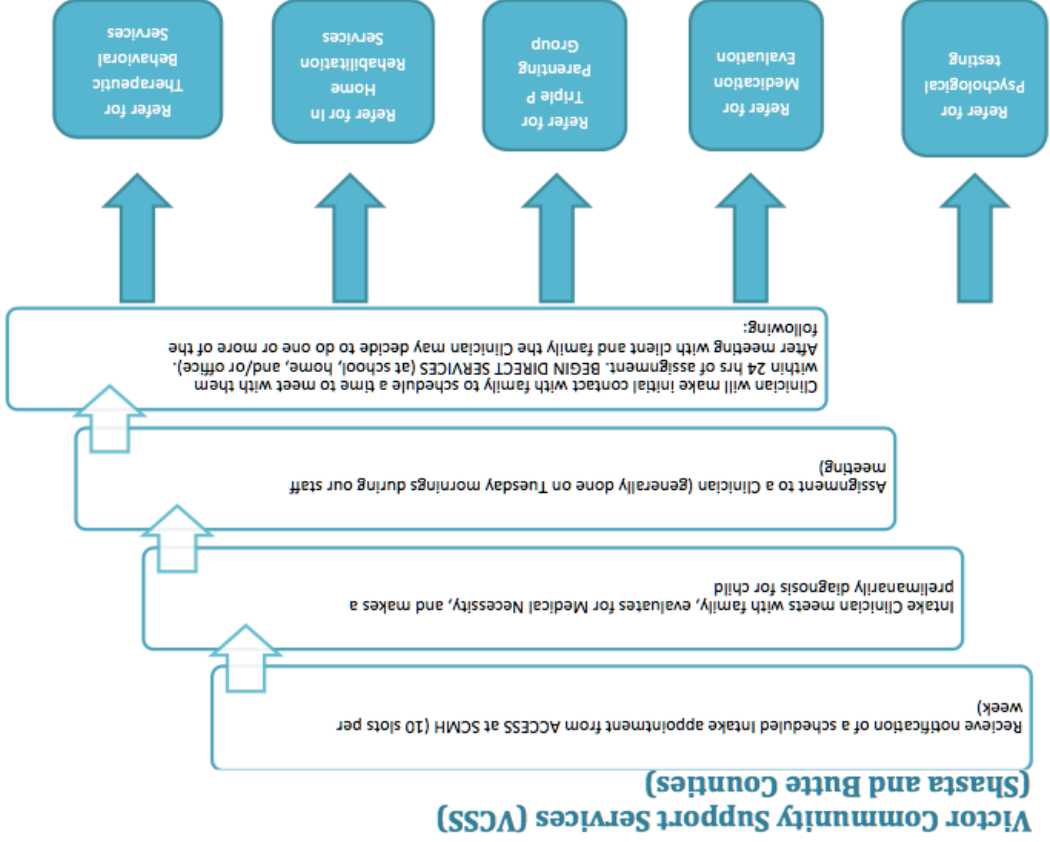
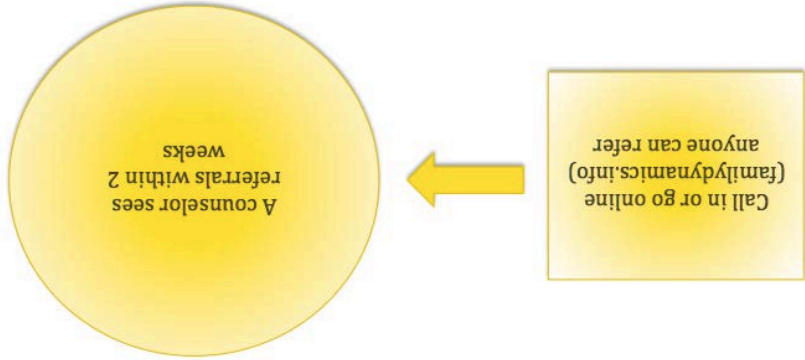
**Triage Questions for Appropriate Referral
(Mental Health or Counseling)**

- What insurance does your child have? (Private, State Medi-Cal, Managed Care Medi-Cal)
- What other service is your child getting now?
- Are you seeing any clinicians now or in the past?
- Are you looking for counseling for your child or family?
- What school district do you live in? Are you connected to a counselor?
- Who has legal authority to make referral? (Kinship, foster, divorced)

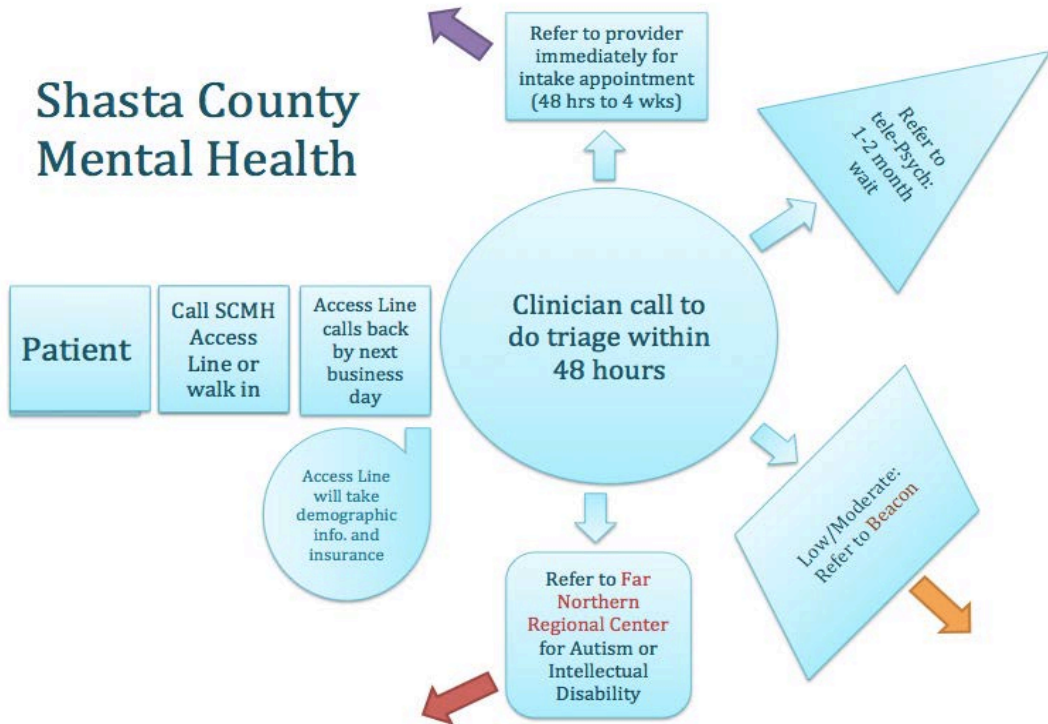
Beacon



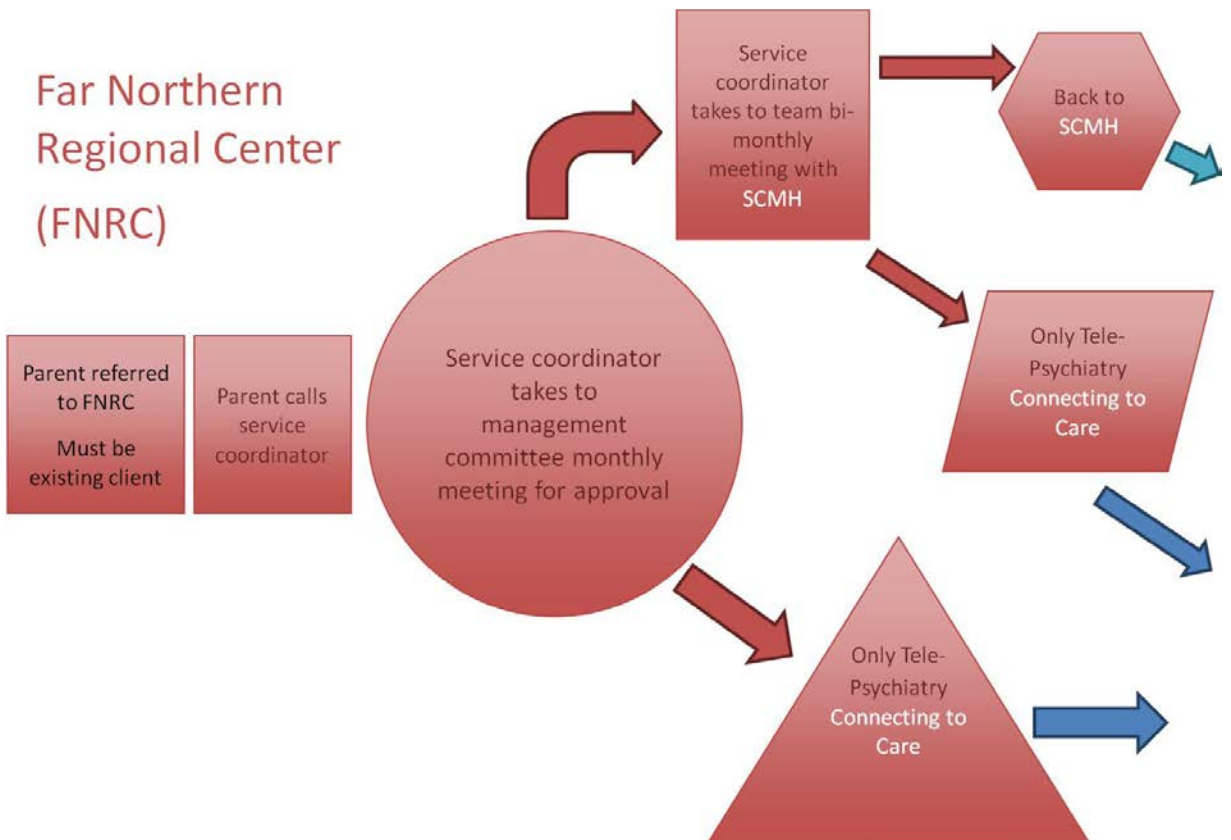
Family Dynamics Resource Center (Shasta, Tehama, and Trinity Co.)



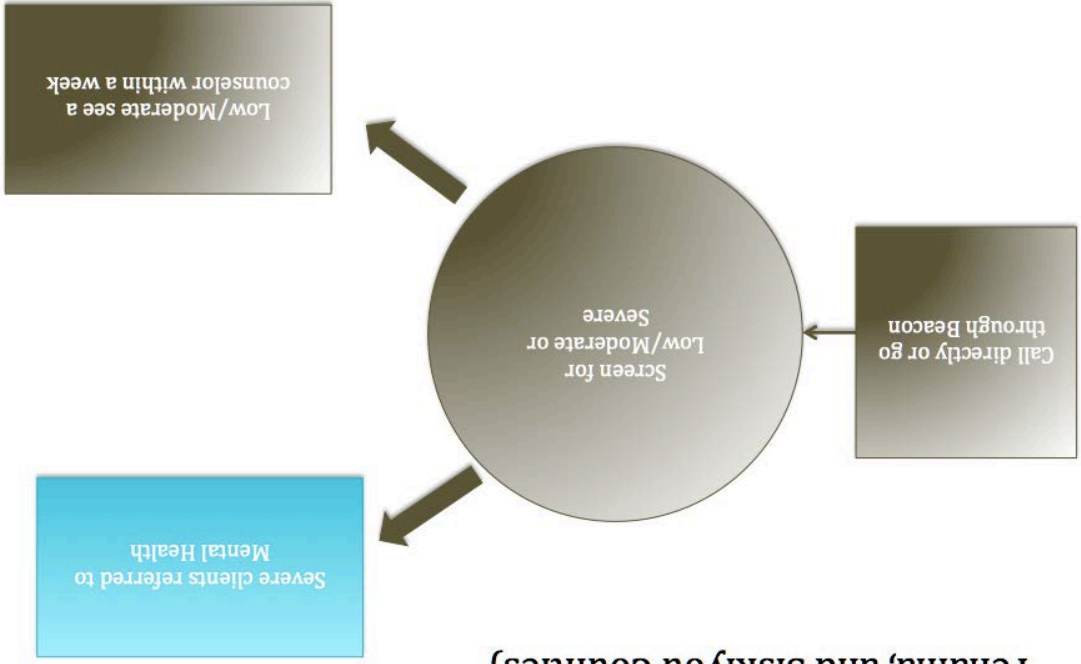
Shasta County Mental Health



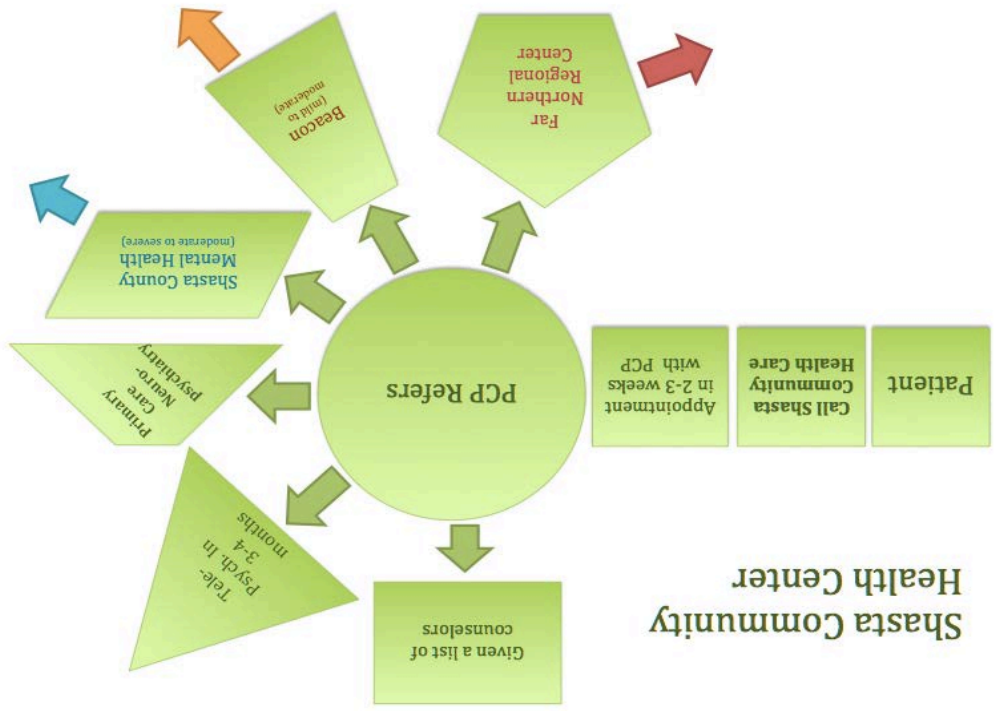
Far Northern Regional Center (FNRC)



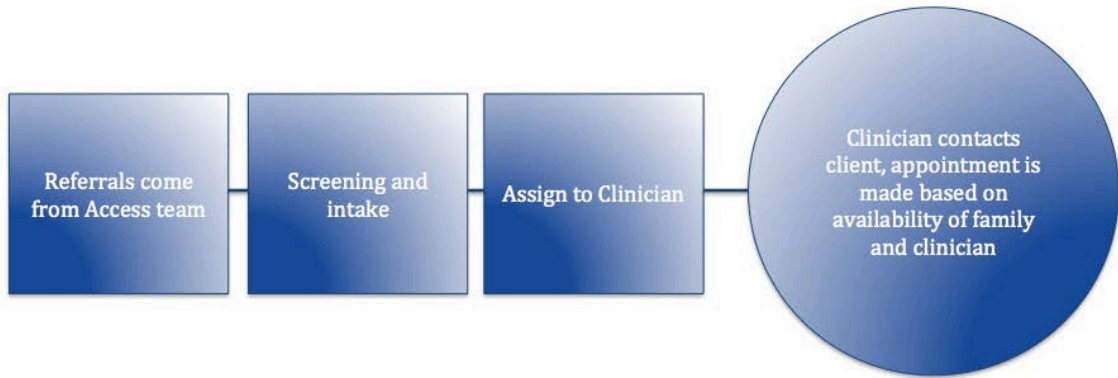
Lassen Counseling Services (Shasta, Tehama, and Siskiyou Counties)



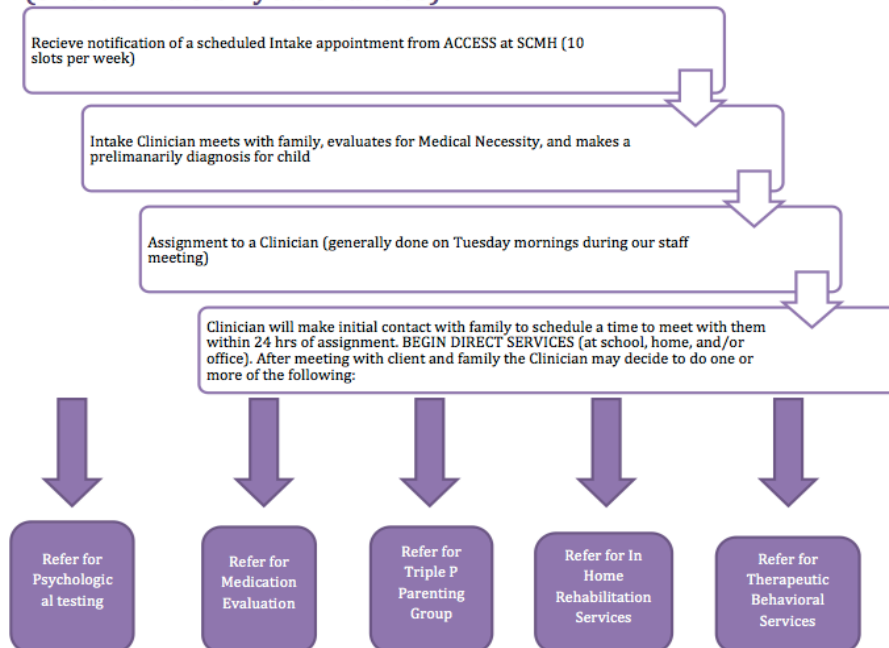
Shasta Community Health Center



Remi Vista (Enterprise School District, Siskiyou, Butte, Shasta, and Trinity Counties)



North Valley Catholic Social Services (NVCSS) (Shasta and Siskiyou Counties)



EDUCATIONALLY RELATED MENTAL HEALTH SERVICES (ERMHS)

Referral Process

